

PetTrack

www.pettrack.com.au



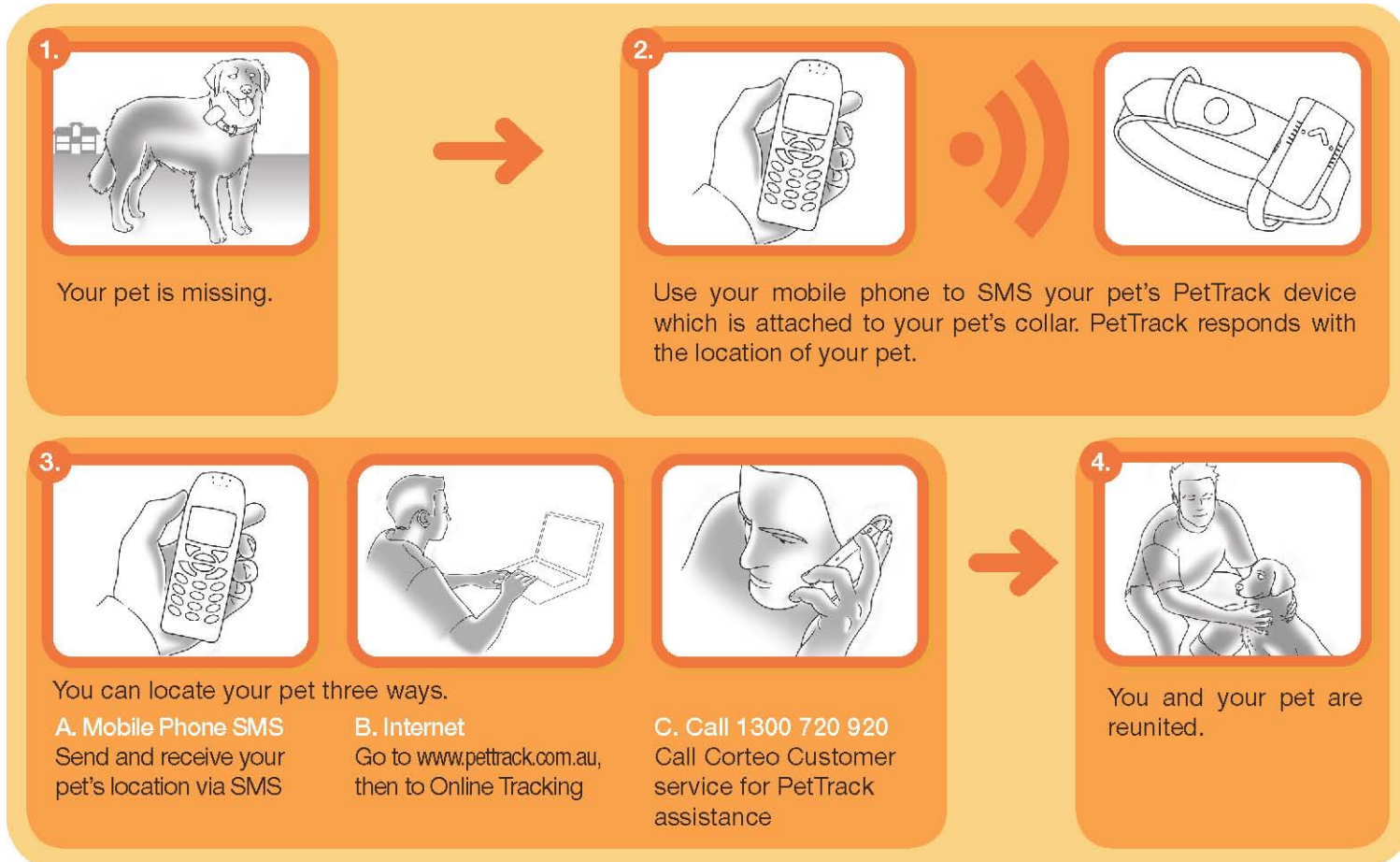
How PetTrack Works

Lost your pet? With one SMS, you can locate your pet in just a few minutes. PetTrack uses the latest GPS/GSM technologies to enable you to locate your pet. PetTrack is powered by 3G. So "Wherever They Go", wherever there is 3G mobile reception, you can track your pet with PetTrack.

PetTrack does not harm or frighten your pet.

PetTrack attaches to your pet's collar. When you SMS your pet, PetTrack transmits back to your mobile the location of your pet. You will receive the coordinates or a map with the street, suburb plus coordinates.

Alternatively, you can go online to www.pettrack.com.au to Online Tracking and just follow the prompts to check on your pet.



PetTrack Security

PetTrack has a security capability which ensures that only mobile numbers authorised (programmed in) by PetTrack owners, can communicate with the PetTrack device. You are in control of who is allowed to know your pet's location. You can set PetTrack to monitor or track your pet periodically, at certain times of day or just SMS whenever you wish to have an update on your pet's location.

If you choose to log in online to check on your pet, there is password security. If you phone PetTrack for assistance, there is a security procedure.

"Wherever They Go" PetTrack gives you added security and peace of mind.